

Indexing Plungers

**Steel / Stainless Steel, for Welding,
with or without Rest Position, with Pull Ring or Latch**

SPECIFICATION

Types

- Type **A**: Square, with pull ring, mounted
- Type **AU**: Square, with pull ring, unmounted
- Type **R**: Round, with pull ring, mounted
- Type **RU**: Round, with pull ring, unmounted
- Type **C**: Square, with pull ring, mounted (riveted)
- Type **CU**: Square, with pull ring, unmounted
- Type **T**: Round, with pull ring, mounted (riveted)
- Type **TU**: Round, with pull ring, unmounted
- Type **E**: Square, with latch, mounted (riveted)
- Type **EU**: Square, with latch, unmounted
- Type **V**: Round, with latch, mounted (riveted)
- Type **VU**: Round, with latch, unmounted

Guide

- Steel precision casting **ST**
Weldable, blackened
- Stainless steel precision casting AISI 316 **A4**
Weldable

Pull ring

- Steel precision casting
Zinc plated, blue passivated (for ST)
- Stainless steel precision casting AISI 316 (for A4)

Latch

- Steel precision casting
Zinc plated, blue passivated (for ST)
- Stainless steel precision casting AISI 316 (for A4)

Plunger pin

- Steel, zinc plated, blue passivated (for ST)
- Pressure spring
Stainless steel AISI 316 (for A4)

Grub Screw DIN 915 (without rest position)

Countersunk screw (with rest position)

- Steel, zinc plated (for ST)
- Stainless steel (for A4)

Pressure spring

Stainless steel AISI 316Ti



INFORMATION

With indexing plungers GN 722.4, the plunger pin is actuated via the pull ring / latch. This is done either manually, with a cable or by means of an extended pull rod with hook. The **ST** version is designed for applications in steel construction, whereas the stainless steel version **A4** is suitable for use in particularly aggressive environments.

The types with a rest position are used when the plunger pin should temporarily not protrude. For this purpose, the pull ring is turned sideways after the locking pin has been retracted. The ring is held in this position by the catch groove at the top of the guide.

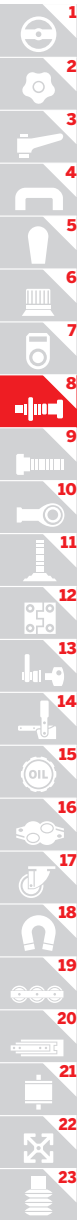
The dimensional tolerances between plunger pin and guide are selected so that the functional reliability is guaranteed even after welding, applying a corrosion protection layer or in case of contamination.

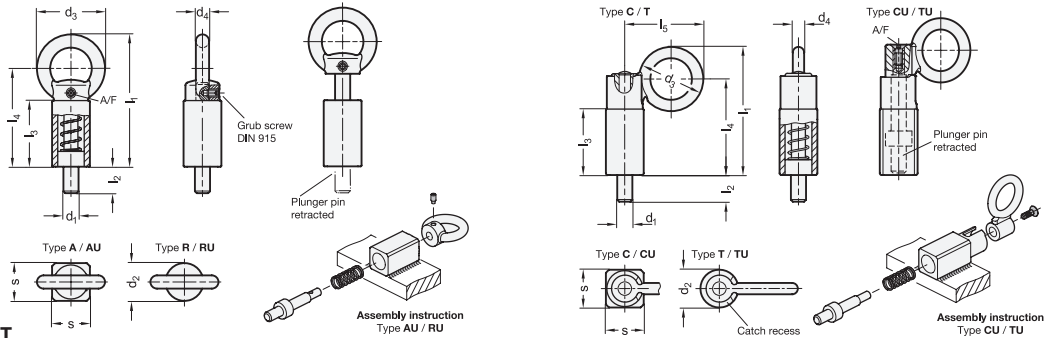
For fastening by welding, the unmounted types AU / RU / CU / TU / EU / VU are particularly recommended to avoid changes to the microstructure of the material due to heating of the spring and plunger pin. In this case, the indexing plunger is assembled only after the surface treatment of the welded guide.

- Range of Indexing Plungers (see page 816)

TECHNICAL INFORMATION

- Load Rating Information (see page A42)
- Stainless Steel Characteristics (see page A26)





GN 722.4-ST

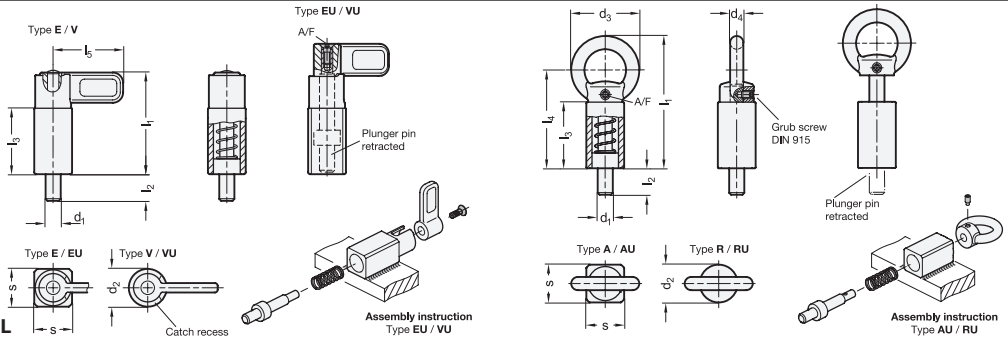
Description	d1		d2	s	d3	d4	l1 ≈	l2	l3	l4	A/F	Spring load in N≈ initial	Spring load in N≈ end	⚖️
	Pin -0.05/-0.25 Bore +0.1/+0.3	Pin -0.05/-0.25 Bore +0.2/+0.4												
GN 722.4-8-20-A-ST	8	-	-	20	36	7	70	14	35	52	2	14	35	132
GN 722.4-10-20-A-ST	10	-	-	20	36	7	70	14	35	52	2	14	35	139
GN 722.4-12-20-A-ST	12	-	-	20	36	7	70	14	35	52	2	14	35	140
GN 722.4-14-20-A-ST	14	-	-	20	36	7	70	14	35	52	2	14	35	144
GN 722.4-16-30-A-ST	16	-	-	30	50	10	100	20	54	78	2.5	22	70	461
GN 722.4-20-30-A-ST	20	-	-	30	50	10	100	20	54	78	2.5	22	70	488
GN 722.4-8-20-AU-ST	8	-	-	20	36	7	70	14	35	52	2	14	35	132
GN 722.4-10-20-AU-ST	10	-	-	20	36	7	70	14	35	52	2	14	35	139
GN 722.4-12-20-AU-ST	12	-	-	20	36	7	70	14	35	52	2	14	35	140
GN 722.4-14-20-AU-ST	14	-	-	20	36	7	70	14	35	52	2	14	35	144
GN 722.4-16-30-AU-ST	16	-	-	30	50	10	100	20	54	78	2.5	22	70	461
GN 722.4-20-30-AU-ST	20	-	-	30	50	10	100	20	54	78	2.5	22	70	488
GN 722.4-8-20-R-ST	-	8	20	-	36	7	70	14	35	52	2	14	35	114
GN 722.4-10-20-R-ST	-	10	20	-	36	7	70	14	35	52	2	14	35	117
GN 722.4-12-20-R-ST	-	12	20	-	36	7	70	14	35	52	2	14	35	121
GN 722.4-14-20-R-ST	-	14	20	-	36	7	70	14	35	52	2	14	35	125
GN 722.4-16-30-R-ST	-	16	30	-	50	10	100	20	54	78	2.5	22	70	400
GN 722.4-20-30-R-ST	-	20	30	-	50	10	100	20	54	78	2.5	22	70	418
GN 722.4-8-20-RU-ST	-	8	20	-	36	7	70	14	35	52	2	14	35	114
GN 722.4-10-20-RU-ST	-	10	20	-	36	7	70	14	35	52	2	14	35	117
GN 722.4-12-20-RU-ST	-	12	20	-	36	7	70	14	35	52	2	14	35	121
GN 722.4-14-20-RU-ST	-	14	20	-	36	7	70	14	35	52	2	14	35	125
GN 722.4-16-30-RU-ST	-	16	30	-	50	10	100	20	54	78	2.5	22	70	400
GN 722.4-20-30-RU-ST	-	20	30	-	50	10	100	20	54	78	2.5	22	70	418

GN 722.4-ST-RP-R

Description	d1		d2	s	d3	d4	l1 ≈	l2	l3	l4	l5	A/F	Spring load in N≈ initial	Spring load in N≈ end	⚖️
	Pin -0.05/-0.25 Bore +0.1/+0.3	Pin -0.05/-0.25 Bore +0.2/+0.4													
GN 722.4-8-20-C-ST	8	-	-	20	34	6	67.8	14	35	50.8	41.5	2.5	14	35	147
GN 722.4-10-20-C-ST	10	-	-	20	34	6	67.8	14	35	50.8	41.5	2.5	14	35	148
GN 722.4-12-20-C-ST	12	-	-	20	34	6	67.8	14	35	50.8	41.5	2.5	14	35	149
GN 722.4-14-20-C-ST	14	-	-	20	34	6	67.8	14	35	50.8	41.5	2.5	14	35	151
GN 722.4-16-30-C-ST	16	-	-	30	48	9	102	20	54	78	60	4	22	70	540
GN 722.4-20-30-C-ST	20	-	-	30	48	9	102	20	54	78	60	4	22	70	541
GN 722.4-8-20-CU-ST	8	-	-	20	34	6	67.8	14	35	50.8	41.5	2.5	14	35	147
GN 722.4-10-20-CU-ST	10	-	-	20	34	6	67.8	14	35	50.8	41.5	2.5	14	35	148
GN 722.4-12-20-CU-ST	12	-	-	20	34	6	67.8	14	35	50.8	41.5	2.5	14	35	149
GN 722.4-14-20-CU-ST	14	-	-	20	34	6	67.8	14	35	50.8	41.5	2.5	14	35	151
GN 722.4-16-30-CU-ST	16	-	-	30	48	9	102	20	54	78	60	4	22	70	540
GN 722.4-20-30-CU-ST	20	-	-	30	48	9	102	20	54	78	60	4	22	70	541
GN 722.4-8-20-T-ST	-	8	20	-	34	6	67.8	14	35	50.8	41.5	2.5	14	35	126
GN 722.4-10-20-T-ST	-	10	20	-	34	6	67.8	14	35	50.8	41.5	2.5	14	35	129
GN 722.4-12-20-T-ST	-	12	20	-	34	6	67.8	14	35	50.8	41.5	2.5	14	35	133
GN 722.4-14-20-T-ST	-	14	20	-	34	6	67.8	14	35	50.8	41.5	2.5	14	35	138
GN 722.4-16-30-T-ST	-	16	30	-	48	9	102	20	54	78	60	4	22	70	465
GN 722.4-20-30-T-ST	-	20	30	-	48	9	102	20	54	78	60	4	22	70	483
GN 722.4-8-20-TU-ST	-	8	20	-	34	6	67.8	14	35	50.8	41.5	2.5	14	35	126
GN 722.4-10-20-TU-ST	-	10	20	-	34	6	67.8	14	35	50.8	41.5	2.5	14	35	129
GN 722.4-12-20-TU-ST	-	12	20	-	34	6	67.8	14	35	50.8	41.5	2.5	14	35	133
GN 722.4-14-20-TU-ST	-	14	20	-	34	6	67.8	14	35	50.8	41.5	2.5	14	35	138
GN 722.4-16-30-TU-ST	-	16	30	-	48	9	102	20	54	78	60	4	22	70	465
GN 722.4-20-30-TU-ST	-	20	30	-	48	9	102	20	54	78	60	4	22	70	483



Indexing elements



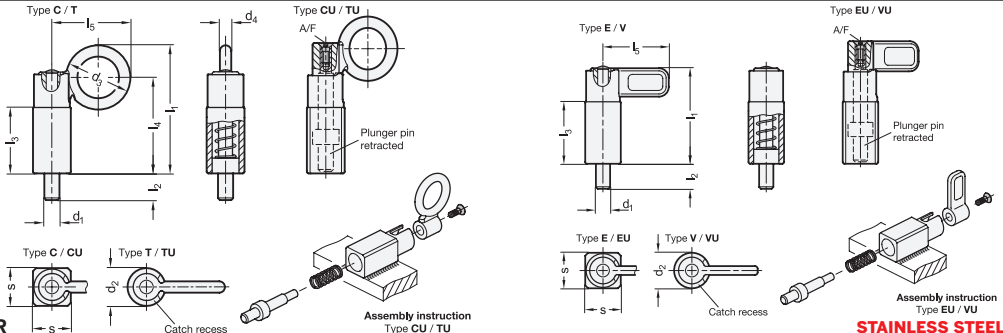
GN 722.4-ST-RP-L

Description	d1		d2	s	l1 ≈	l2	l3	l5	A/F	Spring load in N≈ initial	Spring load in N≈ end	⚖
	Pin -0.05/-0.25 Bore +0.1/+0.3	Pin -0.05/-0.25 Bore +0.2/+0.4										
GN 722.4-8-20-E-ST	8	-	-	20	54	14	35	37	2.5	14	35	143
GN 722.4-10-20-E-ST	10	-	-	20	54	14	35	37	2.5	14	35	147
GN 722.4-12-20-E-ST	12	-	-	20	54	14	35	37	2.5	14	35	150
GN 722.4-14-20-E-ST	14	-	-	20	54	14	35	37	2.5	14	35	155
GN 722.4-16-30-E-ST	16	-	-	30	83	20	54	55	4	22	70	531
GN 722.4-20-30-E-ST	20	-	-	30	83	20	54	55	4	22	70	549
GN 722.4-8-20-EU-ST	8	-	-	20	54	14	35	37	2.5	14	35	143
GN 722.4-10-20-EU-ST	10	-	-	20	54	14	35	37	2.5	14	35	146
GN 722.4-12-20-EU-ST	12	-	-	20	54	14	35	37	2.5	14	35	150
GN 722.4-14-20-EU-ST	14	-	-	20	54	14	35	37	2.5	14	35	154
GN 722.4-16-30-EU-ST	16	-	-	30	83	20	54	55	4	22	70	529
GN 722.4-20-30-EU-ST	20	-	-	30	83	20	54	55	4	22	70	547
GN 722.4-8-20-V-ST	-	8	20	-	54	14	35	37	2.5	14	35	122
GN 722.4-10-20-V-ST	-	10	20	-	54	14	35	37	2.5	14	35	125
GN 722.4-12-20-V-ST	-	12	20	-	54	14	35	37	2.5	14	35	128
GN 722.4-14-20-V-ST	-	14	20	-	54	14	35	37	2.5	14	35	133
GN 722.4-16-30-V-ST	-	16	30	-	83	20	54	55	4	22	70	454
GN 722.4-20-30-V-ST	-	20	30	-	83	20	54	55	4	22	70	472
GN 722.4-8-20-VU-ST	-	8	20	-	54	14	35	37	2.5	14	35	121
GN 722.4-10-20-VU-ST	-	10	20	-	54	14	35	37	2.5	14	35	124
GN 722.4-12-20-VU-ST	-	12	20	-	54	14	35	37	2.5	14	35	128
GN 722.4-14-20-VU-ST	-	14	20	-	54	14	35	37	2.5	14	35	132
GN 722.4-16-30-VU-ST	-	16	30	-	83	20	54	55	4	22	70	453
GN 722.4-20-30-VU-ST	-	20	30	-	83	20	54	55	4	22	70	471

GN 722.4-A4

STAINLESS STEEL

Description	d1		d2	s	d3	d4	l1 ≈	l2	l3	l4	A/F	Spring load in N≈ initial	Spring load in N≈ end	⚖
	Pin -0.05/-0.25 Bore +0.1/+0.3	Pin -0.05/-0.25 Bore +0.2/+0.4												
GN 722.4-8-20-A-A4	8	-	-	20	36	7	70	14	35	52	2	14	35	132
GN 722.4-10-20-A-A4	10	-	-	20	36	7	70	14	35	52	2	14	35	139
GN 722.4-12-20-A-A4	12	-	-	20	36	7	70	14	35	52	2	14	35	140
GN 722.4-14-20-A-A4	14	-	-	20	36	7	70	14	35	52	2	14	35	144
GN 722.4-16-30-A-A4	16	-	-	30	50	10	100	20	54	78	2.5	22	70	461
GN 722.4-20-30-A-A4	20	-	-	30	50	10	100	20	54	78	2.5	22	70	488
GN 722.4-8-20-AU-A4	8	-	-	20	36	7	70	14	35	52	2	14	35	132
GN 722.4-10-20-AU-A4	10	-	-	20	36	7	70	14	35	52	2	14	35	139
GN 722.4-12-20-AU-A4	12	-	-	20	36	7	70	14	35	52	2	14	35	140
GN 722.4-14-20-AU-A4	14	-	-	20	36	7	70	14	35	52	2	14	35	144
GN 722.4-16-30-AU-A4	16	-	-	30	50	10	100	20	54	78	2.5	22	70	461
GN 722.4-20-30-AU-A4	20	-	-	30	50	10	100	20	54	78	2.5	22	70	488
GN 722.4-8-20-R-A4	-	8	20	-	36	7	70	14	35	52	2	14	35	114
GN 722.4-10-20-R-A4	-	10	20	-	36	7	70	14	35	52	2	14	35	117
GN 722.4-12-20-R-A4	-	12	20	-	36	7	70	14	35	52	2	14	35	121
GN 722.4-14-20-R-A4	-	14	20	-	36	7	70	14	35	52	2	14	35	125
GN 722.4-16-30-R-A4	-	16	30	-	50	10	100	20	54	78	2.5	22	70	400
GN 722.4-20-30-R-A4	-	20	30	-	50	10	100	20	54	78	2.5	22	70	418
GN 722.4-8-20-RU-A4	-	8	20	-	36	7	70	14	35	52	2	14	35	114
GN 722.4-10-20-RU-A4	-	10	20	-	36	7	70	14	35	52	2	14	35	117
GN 722.4-12-20-RU-A4	-	12	20	-	36	7	70	14	35	52	2	14	35	121
GN 722.4-14-20-RU-A4	-	14	20	-	36	7	70	14	35	52	2	14	35	125
GN 722.4-16-30-RU-A4	-	16	30	-	50	10	100	20	54	78	2.5	22	70	400
GN 722.4-20-30-RU-A4	-	20	30	-	50	10	100	20	54	78	2.5	22	70	418



GN 722.4-A4-RP-R

STAINLESS STEEL

Description	d ₁		d ₂	s	d ₃	d ₄	l ₁ ≈	l ₂	l ₃	l ₄	l ₅	A/F	Spring load in N _≈ initial	Spring load in N _≈ end	
	Pin -0.05/-0.25 Bore +0.1/+0.3	Pin -0.05/-0.25 Bore +0.2/+0.4													
GN 722.4-8-20-C-A4	8	-	-	20	34	6	67.8	14	35	50.8	41.5	2.5	14	35	147
GN 722.4-10-20-C-A4	10	-	-	20	34	6	67.8	14	35	50.8	41.5	2.5	14	35	148
GN 722.4-12-20-C-A4	12	-	-	20	34	6	67.8	14	35	50.8	41.5	2.5	14	35	149
GN 722.4-14-20-C-A4	14	-	-	20	34	6	67.8	14	35	50.8	41.5	2.5	14	35	151
GN 722.4-16-30-C-A4	16	-	-	30	48	9	102	20	54	78	60	4	22	70	540
GN 722.4-20-30-C-A4	20	-	-	30	48	9	102	20	54	78	60	4	22	70	541
GN 722.4-8-20-CU-A4	8	-	-	20	34	6	67.8	14	35	50.8	41.5	2.5	14	35	147
GN 722.4-10-20-CU-A4	10	-	-	20	34	6	67.8	14	35	50.8	41.5	2.5	14	35	148
GN 722.4-12-20-CU-A4	12	-	-	20	34	6	67.8	14	35	50.8	41.5	2.5	14	35	149
GN 722.4-14-20-CU-A4	14	-	-	20	34	6	67.8	14	35	50.8	41.5	2.5	14	35	151
GN 722.4-16-30-CU-A4	16	-	-	30	48	9	102	20	54	78	60	4	22	70	540
GN 722.4-20-30-CU-A4	20	-	-	30	48	9	102	20	54	78	60	4	22	70	541
GN 722.4-8-20-T-A4	-	8	20	-	34	6	67.8	14	35	50.8	41.5	2.5	14	35	126
GN 722.4-10-20-T-A4	-	10	20	-	34	6	67.8	14	35	50.8	41.5	2.5	14	35	129
GN 722.4-12-20-T-A4	-	12	20	-	34	6	67.8	14	35	50.8	41.5	2.5	14	35	133
GN 722.4-14-20-T-A4	-	14	20	-	34	6	67.8	14	35	50.8	41.5	2.5	14	35	138
GN 722.4-16-30-T-A4	-	16	30	-	48	9	102	20	54	78	60	4	22	70	465
GN 722.4-20-30-T-A4	-	20	30	-	48	9	102	20	54	78	60	4	22	70	483
GN 722.4-8-20-TU-A4	-	8	20	-	34	6	67.8	14	35	50.8	41.5	2.5	14	35	126
GN 722.4-10-20-TU-A4	-	10	20	-	34	6	67.8	14	35	50.8	41.5	2.5	14	35	129
GN 722.4-12-20-TU-A4	-	12	20	-	34	6	67.8	14	35	50.8	41.5	2.5	14	35	133
GN 722.4-14-20-TU-A4	-	14	20	-	34	6	67.8	14	35	50.8	41.5	2.5	14	35	138
GN 722.4-16-30-TU-A4	-	16	30	-	48	9	102	20	54	78	60	4	22	70	465
GN 722.4-20-30-TU-A4	-	20	30	-	48	9	102	20	54	78	60	4	22	70	483

GN 722.4-A4-RP-L

STAINLESS STEEL

Description	d ₁		d ₂	s	l ₁ ≈	l ₂	l ₃	l ₅	A/F	Spring load in N _≈ initial	Spring load in N _≈ end	
	Pin -0.05/-0.25 Bore +0.1/+0.3	Pin -0.05/-0.25 Bore +0.2/+0.4										
GN 722.4-8-20-E-A4	8	-	-	20	54	14	35	37	2.5	14	35	144
GN 722.4-10-20-E-A4	10	-	-	20	54	14	35	37	2.5	14	35	147
GN 722.4-12-20-E-A4	12	-	-	20	54	14	35	37	2.5	14	35	151
GN 722.4-14-20-E-A4	14	-	-	20	54	14	35	37	2.5	14	35	156
GN 722.4-16-30-E-A4	16	-	-	30	83	20	54	55	4	22	70	533
GN 722.4-20-30-E-A4	20	-	-	30	83	20	54	55	4	22	70	552
GN 722.4-8-20-EU-A4	8	-	-	20	54	14	35	37	2.5	14	35	143
GN 722.4-10-20-EU-A4	10	-	-	20	54	14	35	37	2.5	14	35	146
GN 722.4-12-20-EU-A4	12	-	-	20	54	14	35	37	2.5	14	35	150
GN 722.4-14-20-EU-A4	14	-	-	20	54	14	35	37	2.5	14	35	155
GN 722.4-16-30-EU-A4	16	-	-	30	83	20	54	55	4	22	70	530
GN 722.4-20-30-EU-A4	20	-	-	30	83	20	54	55	4	22	70	549
GN 722.4-8-20-V-A4	-	8	20	-	54	14	35	37	2.5	14	35	122
GN 722.4-10-20-V-A4	-	10	20	-	54	14	35	37	2.5	14	35	125
GN 722.4-12-20-V-A4	-	12	20	-	54	14	35	37	2.5	14	35	129
GN 722.4-14-20-V-A4	-	14	20	-	54	14	35	37	2.5	14	35	134
GN 722.4-16-30-V-A4	-	16	30	-	83	20	54	55	4	22	70	456
GN 722.4-20-30-V-A4	-	20	30	-	83	20	54	55	4	22	70	474
GN 722.4-8-20-VU-A4	-	8	20	-	54	14	35	37	2.5	14	35	121
GN 722.4-10-20-VU-A4	-	10	20	-	54	14	35	37	2.5	14	35	125
GN 722.4-12-20-VU-A4	-	12	20	-	54	14	35	37	2.5	14	35	128
GN 722.4-14-20-VU-A4	-	14	20	-	54	14	35	37	2.5	14	35	133
GN 722.4-16-30-VU-A4	-	16	30	-	83	20	54	55	4	22	70	454
GN 722.4-20-30-VU-A4	-	20	30	-	83	20	54	55	4	22	70	472